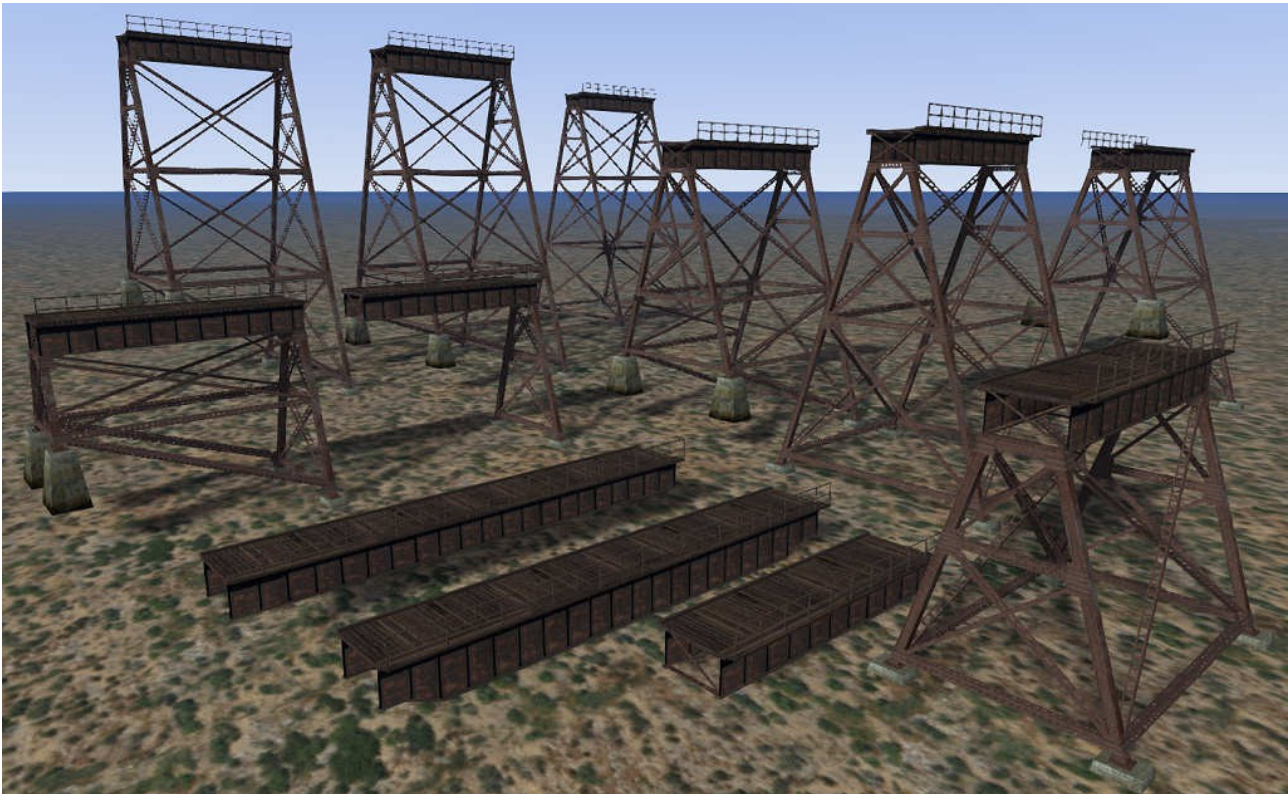


GN Steel Trestle Kit Scenery Objects for RailWorks

by Golden Age of Railroading



System Requirements and Installation:

System Requirements: **RailWorks** needs to be installed, there are no special hard- or software requirements which would go beyond those of the game itself. These assets have been designed for Railworks 3 / Train Simulator 2012, but may also work in older versions of that game.

Installation:

1. Download the .RWP file and save it in a secure place on your hard disk – just in case you might have to reinstall it at a later time.
2. Launch **RailWorks** and select the **Package Manager** on the Welcome Screen.
3. Click the **Install** button, browse to the file from step one, click **Open**. The package will be installed now, after which you can already use the new assets in the game!
4. To be able to place the objects in a route, you will first have to enable the **object filter** (left-hand mid flyout window, button that shows a blue cube with an orange triangle) for developer "GreatNortherner", product "GNRy".
5. You will now find the objects in the left-hand flyout assets browser, listed under Track Infrastructure as "GN Brg..."

Copyright, Repaints, Distribution, Warranty:

All of the contents of this software are [copyrighted material](#). You may use and include them in route uploads as long as they are free of charge. You may not redistribute the entire software package itself (the .rwp file).

You can do repaints of the included objects and you are allowed to distribute them as long as it is free of charge. If you wish to include the objects in a payware project of yours, please contact us first.

This software is provided to you on an "as is" basis without any express or implied [warranty](#) of any kind.

Contact Information:

<http://www.golden-age-rails.com>

contact@golden-age-rails.com